

CEL – Networking

T008

Tuesday, 15/11/2016

08:30 – 11:30

WORKFORCE DEVELOPMENT AUTHORITY



P.O. BOX 2707 Kigali, Rwanda Tel: (+250) 255113365

**ADVANCED LEVEL NATIONAL EXAMINATIONS, 2016,
TECHNICAL AND PROFESSIONAL STUDIES**

EXAM TITLE: Networking
OPTION: Computer Electronics (CEL)
DURATION: 3hours

INSTRUCTIONS:

The paper is composed of **three (3) main Sections** as follows:

Section I: Seventeen (17) compulsory questions.	55 marks
Section II: Attempt any three (3) out of five questions.	30 marks
Section III: Attempt any one (1) out of three questions.	15 marks

Note:

Every candidate is required to carefully comply with the above instructions. Penalty measures will be applied on their strict consideration.

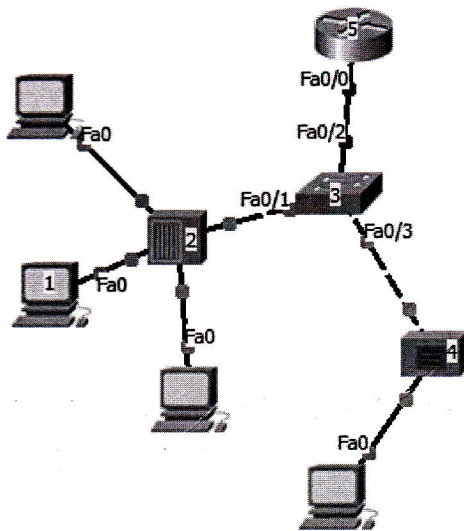
Section I. Seventeen (17) Compulsory questions**55marks**

01. How many layers are there under TCP/IP? List them. **2marks**
02. How does a network topology affect your decision in setting up a network? **3marks**
03. Write short notes on the following terms: **10marks**
- a. Backbone network
 - b. Node
 - c. Anonymous FTP
 - d. Subnet mask
 - e. Broadcast domain.
04. What is the maximum length allowed for a UTP cable? **2marks**
05. Explain data encapsulation. **3marks**
06. Write in full the following: **5marks**
- a. VPN:
 - b. NAT:
 - c. RIP:
 - d. NIC:
 - e. ICMP:
07. What is the job of the Network Layer under the OSI reference model? **3marks**
08. What are different ways of securing a computer network? **3marks**
09. What are proxy servers and how do they protect computer networks? **3marks**
10. What is the difference between CSMA/CD and CSMA/CA? **2marks**
11. You need to connect two computers for file sharing. Is it possible to do this without using a hub or router? **2marks**
12. In a network that contains two servers and twenty workstations, where is the best place to install an Anti-virus program? **2marks**
13. How can you identify the IP class of a given IP address? **3marks**
14. Why do we use Subnet mask? What are its uses? **3marks**
15. What is the difference between public and private IP? **3marks**
16. One way of securing a network is through the use of passwords. What can be considered as good passwords? **3marks**
17. Distinguish Bridge from Switch. **3marks**

Section II. Choose and answer any three (3) questions.

30marks

18. Define VLAN and list different types of VLAN. **10marks**
19. Describe the following Wired Networks Technologies: **10marks**
- A. Twisted pair. **(3marks)**
 - B. Coaxial cable. **(3marks)**
 - C. Optical fiber. **(4marks)**
20. A. What Media Access Methods. **2marks**
B. Differentiate serial communication form parallel communication. **8marks**
21. Discuss Communication Modes. **10marks**
22. Specify different network devices that are used in the following network topology. **10marks**



Section III. Choose and answer any one (1) question.

15marks

23. A. What are the maximum hosts in a class A, B and C network?
B. Discuss types of fiber optic cables.
24. A company would like to break its Class C network IP address 192.168.10.0/24 into 4 different subnets. Find ranges of IP addresses for each subnet and new mask.
25. Compare OSI model and TCP/IP model.